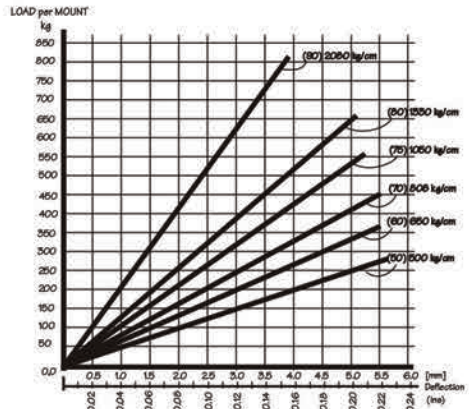


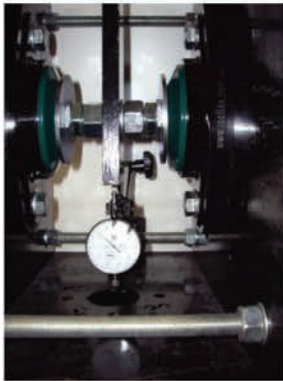
## IsoFlex Mount Test Procedures: - Typical Test Modes & Load vs Deflection Graphs



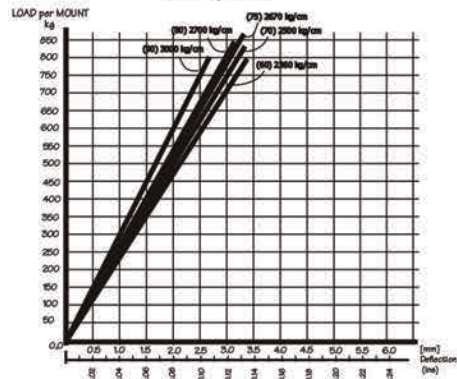
1. Axial Load Test  
[Vertical down direction]



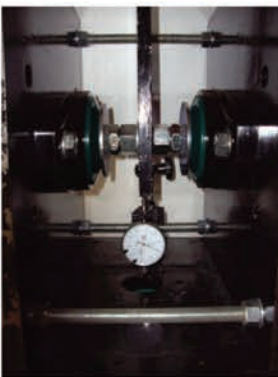
Graph 1: Static Axial Vertical Load(kg) (A-direction) versus Deflection(mm) (In)  
Data shown: (x) = SDH-A Hardness  
kg/cm = Spring Rate



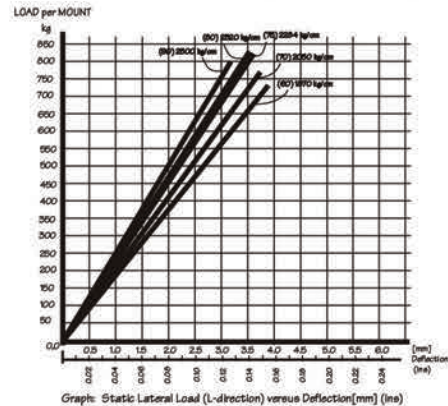
2. Thrust Load Test  
[Longitudinal direction]



Graph: Static Longitudinal Thrust Load (T-direction) versus Deflection(mm) (In)



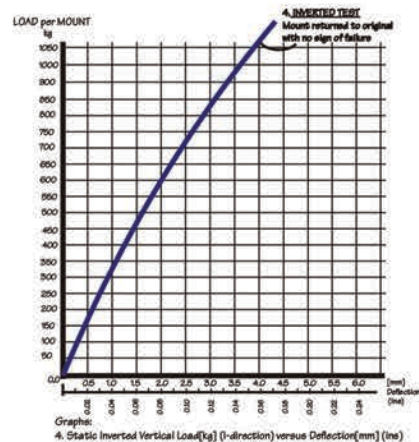
3. Lateral Load Test



Graph: Static Lateral Load (L-direction) versus Deflection(mm) (In)



4. Inverted Load Test



Graph: 4. Static Inverted Vertical Load(kg) (I-direction) versus Deflection(mm) (In)